

## IMAGEM EM NEUROLOGIA/IMAGE IN NEUROLOGY

## Glioblastoma as an Advanced Parkinson's Disease Mimicker

## Glioblastoma como Mimetizador de Doença de Parkinson Avançada

✉ Rita Raimundo <sup>1,\*</sup>, Paulo Linhares <sup>2,3,4</sup>, Maria José Rosas <sup>4,5</sup>

1-Serviço de Neurologia / Centro Hospitalar de Trás-os-Montes e Alto Douro, Vila Real, Portugal

2-Serviço de Neurocirurgia / Centro Hospitalar de São João, Porto, Portugal

3-Departamento de Neurociências Clínicas e Saúde Mental / Faculdade de Medicina, Universidade do Porto, Porto, Portugal

4-Unidade de Doenças de Movimento e Cirurgia Funcional / Centro Hospitalar de São João, Porto, Portugal

5-Serviço de Neurologia / Centro Hospitalar de São João, Porto, Portugal

DOI: <https://doi.org/10.46531/sinapse/IN/210064/2022>

#### Informações/Informations:

Imagem em Neurologia, publicado em Sinapse, Volume 22, Número 1, janeiro-março 2022. Versão eletrónica em [www.sinapse.pt](http://www.sinapse.pt);

Image in Neurology, published in Sinapse, Volume 22, Number 1, January-March 2022.

Electronic version in [www.sinapse.pt](http://www.sinapse.pt)

© Autor (es) (ou seu (s) empregador (es)) e Sinapse 2022. Reutilização permitida de acordo com CC BY-NC.

© Author(s) (or their employer(s)) and Sinapse 2022. Re-use permitted under CC BY-NC. No commercial re-use.

#### Keywords:

Deep Brain Stimulation; Glioma.

#### Palavras-chave:

Estimulação Cerebral Profunda; Glioma.

#### \*Autor Correspondente / Corresponding Author:

Ana Rita Marcos Raimundo  
Departamento de Neurologia,  
Centro Hospitalar  
Trás-os-Montes e Alto Douro,  
EPE, Unidade Hospitalar de  
Vila Real  
Av. Noruega, Lordelo  
5000-508 Vila Real, Portugal  
[ritaraimundo15@gmail.com](mailto:ritaraimundo15@gmail.com)

Recebido / Received: 2021-10-17

Aceite / Accepted: 2021-01-25

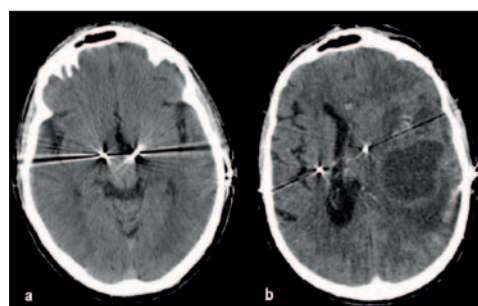
Publicado / Published: 2022-04-07

A 62 year-old caucasian man with advanced Parkinson's disease (PD) beginning at the age of 39, presenting a akinetic-rigid subtype and right predominance, was submitted to bilateral deep brain stimulation (DBS) of the subthalamic nuclei (**Fig. 1a**) at 51 with significant clinical improvement, although with no effect in the pre-existing dysarthria.

In the last years, he had been progressively worsening in language (dysarthrophonia), balance (postural instability, with need of a walking aid) and cervical dystonia, scoring 28 in part III of UPDRS in the last Neurological consultation (March 2021). Moreover, the stimulation parameters for DBS were set to 3.5V/90µs/160Hz on the left and 3.2V/60µs/160Hz on the right side (voltage/impulse duration/impulse frequency) and he was medicated with levodopa/benserazide 250/25 mg ¼-tablet tid and pramipexole 1.05 mg id.

In April 2021, he presented in the emergency room with a 2 weeks period of severe clinical deterioration with behavioral changes, anarthria and impossible gait. His neurological examination additionally showed global aphasia, right homonymous hemianopsia, right central facial palsy and ipsilateral pyramidal syndrome, on top of the previously known, although aggravated, right akinetic-rigid parkinsonian syndrome, ipsilateral pisa syndrome and cervical dystonia.

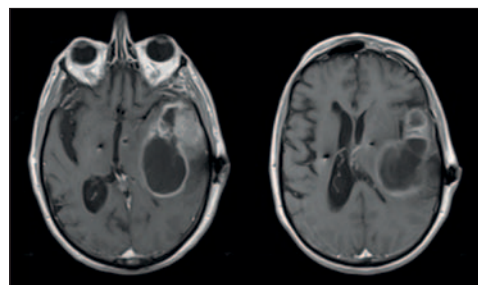
The computed tomography (CT) scan disclosed an intra-axial lesion in the left hemisphere with solid and cystic components, displaying peripheral contrast enhancement and edema and causing a significant mass effect and



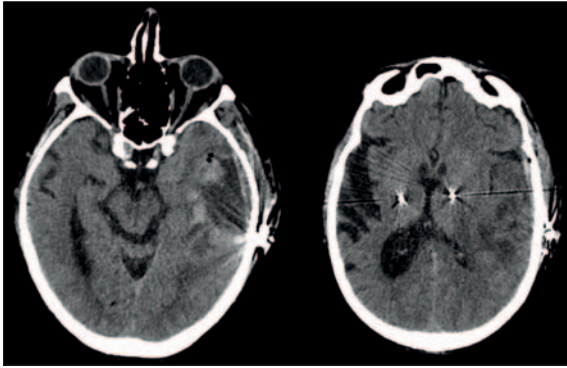
**Figure 1.** **Figure 1a:** DBS electrodes in the subthalamic nuclei, in the post-op CT scan. **Figure 1b:** Left fronto-temporo-parietal cystic lesion, with peripheral contrast enhancement and mass effect, causing a significant displacement of the DBS electrodes.

shift of the DBS electrodes (**Fig. 1b**), which remained operational although with elevated impedance in 2 non-stimulated contacts on the right electrode.

The extra-cranial extensions of the DBS system were substituted, with subsequent normalization of the impedance values, allowing the performance of a brain MR (**Fig. 2**) and



**Figure 2.** Large expansive cystic-necrotic lesion centered in the left temporal lobe, with intense and heterogeneous contrast enhancement and augmented perfusion, producing a significant shift in the DBS electrodes. The images are compatible with a neoplastic lesion, probably in line with a high-grade glioma (T1-weighted image with gadolinium contrast).



**Figure 3.** Post-op CT scan showing no midline deviation and minor displacement of the DBS electrodes. The surgical site displays a heterogeneous peripheral contrast enhancement, probably related to post-op inflammatory phenomena or tumor remnant.

confirmation the previously found neoplasm, which was surgically removed (**Fig. 3**) and disclosed a glioblastoma, WHO IV.

Hence, we want to point out a mimicker of a long standing Parkinson's disease submitted to DBS. This phase of PD evolution typically shows a progressive deterioration in language and gait, associated with cognitive/psychiatric symptoms, all of them non-responsive to DBS adjustments, frequently requiring dopaminergic medication and non-pharmacological interventions, such as physical and speech therapy.<sup>1</sup>

However, a rapid clinical deterioration in chronic DBS patients should make us consider several scenarios: stimulation parameters or pharmacological maladjustment, DBS system dysfunction, primary disease progression and, at last, the appearance of a new pathology.<sup>2</sup> Additionally, the development of atypical symptoms (such as aphasia and right pyramidal syndrome in our patient) points to the last option, requiring an immediate imaging study.<sup>2</sup>

The appearance of malignant glial tumors in chronically stimulated patients is rare (only 4 cases reported in the literature) and probably under-diagnosed, consider-

ing the global epidemiology of DBS patients and glial tumors. The relation between these two pathologies has been extensively investigated and no causality effect was found so far, although further studies are required.<sup>2,3</sup> ■

#### Contributorship Statement / Declaração de Contribuição

RR: Seleção e orientação do caso clínico, Redação do manuscrito.

PL: Seleção e orientação do caso clínico, Revisão e Crítica.

MJR: Seleção e orientação do caso clínico, Revisão e Crítica.

#### Responsabilidades Éticas

Conflitos de Interesse: Os autores declaram a inexistência de conflitos de interesse na realização do presente trabalho.

Fontes de Financiamento: Não existiram fontes externas de financiamento para a realização deste artigo.

Confidencialidade dos Dados: Os autores declaram ter seguido os protocolos da sua instituição acerca da publicação dos dados de doentes.

Consentimento: Consentimento do doente para publicação obtido.

Proveniência e Revisão por Pares: Não comissionado; revisão externa por pares.

#### Ethical Disclosures

Conflicts of Interest: The authors have no conflicts of interest to declare.

Financing Support: This work has not received any contribution, grant or scholarship.

Confidentiality of Data: The authors declare that they have followed the protocols of their work center on the publication of data from patients.

Patient Consent: Consent for publication was obtained.

#### References / Referências

1. Jankovic J. Parkinson Disease and Other Movement Disorders. In: Daroff RB, Jankovic J, Mazziotta JC, Pomeroy SL, editors. *Bradley's Neurology in Clinical Practice*. 7th ed. Amsterdam: Elsevier; 2016. p. 1427-1437.
2. Roldán P, Najarro R, Di Somma A, Culebras D, Hoyos JA, Compta Y, et al. Malignant glioma developed on a patient under deep brain stimulation patient: pitfalls in management. *World Neurosurg*. 2019; 129:85-89. doi:10.1016/j.wneu.2019.05.234.
3. Mindermann T, Mendelowitsch A. Deep brain stimulation and development of a high-grade glioma: incidental or causal association? *Acta Neurochir*. 2016; 158:915-7. doi: 10.1007/s00701-016-2773-9.